

## Technical Parameter

Items		T4	T8	
Detector characteristics	Detector type	Un-cooled FPA micro-bolometer		
	Array size/format	160×120	384×288	
	Field of view/min focus distance	25°×19°/0.5m		
Image characteristics	Spatial resolution (IFOV)	2.72mrad	1.32mrad	
	Thermal sensitivity	≤0.06°C@30°C	≤0.04°C@30°C	
	Frame frequency	50Hz		
	Focus	Manual		
	Zoom	2X, 4X		
Image display	Spectral range	8-14μm		
	Built-in CCD camera	3 million pixels, COMS camera modules, 2 LED lights		
	LCD	3.6" TFT LCD, 640 x 480		
Measurement	Image display	IR and Visual image can be shifted fast; image fusion.		
	Image processing	Automatic / manual/ auto-enhancement		
	Temperature ranges	-20°C- +350°C(can expanded to 1200°C)	-20°C- +650°C(can expanded to 1200°C or 2000°C)	
	Accuracy	± 2°C or ± 2% of reading, Whichever is greater		
	Measurement correction	Automatic / manual		
	Measurement mode	Up to 5 movable spots. Up to 5 movable areas. Up to 2 movable lines (maximum, minimum and average temperatures). Line profile. Isotherms. Temperature difference. Alarm(voice, color)		
	Image control	Color palette 11palettes changeable Image adjustment Auto/manual gain and brightness		
	Setup functions	Date/time, temperature unit, language		
	Emissivity correction	Variable from 0.01 to 1.0		
	Background temperature correction	Automatic corrections according to user input		
Image storage	Atmospheric transmission correction	Automatic correction according to user input object distance, humidity and temperature		
	Storage card	8G SD card, max 32G		
	Storage mode	Manual/Auto single file saving, IR and Visual image link saving, fusion recording Thermal: JPEG with original thermal measurement data included; H.264 in network recording Visual: JPEG, H.264 with fusion.		
	File format	Input via built-in microphone up to 60 seconds of digital voice clip per image stored with image		
Laser pointer	Voice annotation	Input via built-in microphone up to 60 seconds of digital voice clip per image stored with image		
	Laser locator	Class 2, 1mw/635nm(red), IEC 60 285		
	Battery type	Li-Ion, rechargeable		
Power source	Battery operating time	3 hours continuous operation		
	Battery charging mode	Intelligent charger or car power adaptor 12V(optional)		
	Power saving	Auto-sleep and auto-shut down		
Environment	External power	12V DC		
	Operating temperature	-15°C- +50°C		
	Humidity	≤95% non-condensing		
	Encapsulation	IP54		
Physical characteristics	Drop test	2m		
	Weight	1kg		
	Dimension (W×H×D)	105×245×230mm		
Interface	SD card slot	Micro SD card cassette		
	External network input	With function of IP address real-time image transferring setup		
	Video output	YES		
	Audio / data transfer	Bluetooth (earphone/RS232)		

▲ The information contained in this document is subject to change without notice

## Application Gallery



### Application in power industry

- Clamps & transmission equipment detection
- Power transformation & distribution equipment detection



### Application in construction

- Underground heating system detection
- Insulation trouble
- Hollowing detection
- Water stain damage
- Window airtightness
- Radiators and pipes



### Application in technology

- Temperature distribution measurement
- Temperature change analysis
- Temperature differences judgement



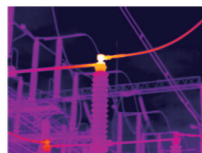
### Application in electrical and mechanical industry

- Security detection
- Insulation failure
- Loose interface detection
- HVAC error
- Components malfunction
- Repair verification

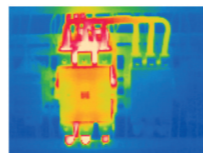


### New energy application

- Measurement of LED chips and lights temperature and cooling process
- Detection of Solar components hot spots, solar cells welding process, inverter and circuit
- Analysis of high and low temperature distribution, temperature uniformity and differences in manufacturing



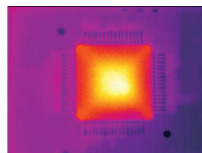
Connector overheating inspection



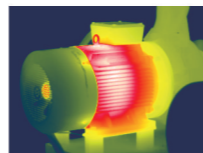
Power Distribution cabinet inspection



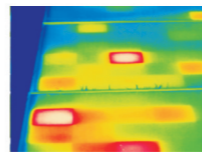
Chimney Inside Wall



Chip Overheat check



Motor inspection



Solar components with polysilicon

**ZHEJIANG DALI TECHNOLOGY CO.,LTD**  
 Add: 639 Binkang Road, Hangzhou, P.R.CHINA, 310053  
 Tel: +86-571-86695603 Fax: +86-571-86695600  
 http://www.dali-tech.com E-mail: sales@dali-tech.com



# Professional Handheld Industry Inspection Thermal Imaging Camera

## T4/T8



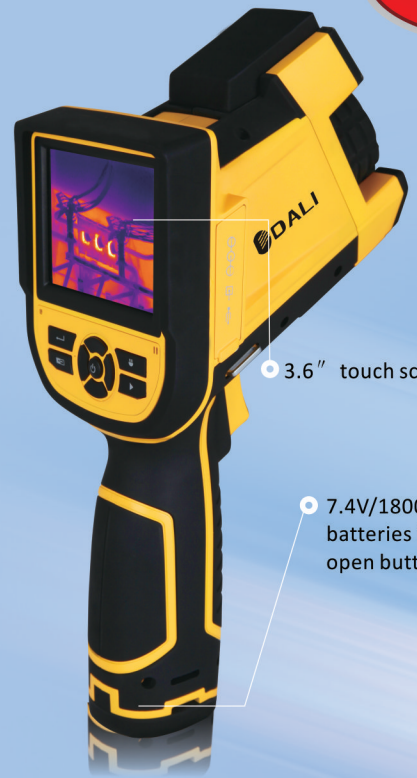


DALI PROFESSIONAL  
THERMAL IMAGING CAMERA MANUFACTURER

T4/T8 Series

EXCELLENT IMAGE QUALITY  
384 x 288 Pixel

**Drop-resistant**



3.6" touch screen

7.4V/1800mAh rechargeable lithium batteries inside, this is battery cap open button



Dual LED fill lights make clearer shot

300 million pixel CMOS camera modules inside

160×120/384×288 pixel

Laser locator



**DALI T4/T8**

# T4/T8

Newly released by DALI, T4/T8 series, using a new ergonomic design concept, are a kind of handheld IR Thermal Imaging Camera designed for Electric & Industrial predictive maintenance with pixel of 160×120 /384×288. T4/T8 will give a fusion display with the 3 million pixel daylight image and IR thermal image through a convenient 3.6" touch screen at your fingertips. Importantly, Network real-time transmission of pictures and video features play an excellent role in the field of scientific research and industrial control.



2-meters drop resistant



3 million daylight image



3.6" touch screen



Dual LED fill lights make clearer shot



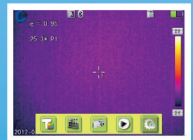
Fusion display of IR & daylight image



Bluetooth audio transmission



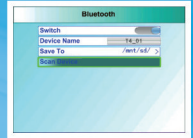
Developed with user friendly and easy operating " GUI " system



Standby interface



Main menu



Bluetooth setting



Internet setting



Real-time transmission of pictures and infrared videos



Real-time video tranfering to professional IR Video Analyse Software on your computer